



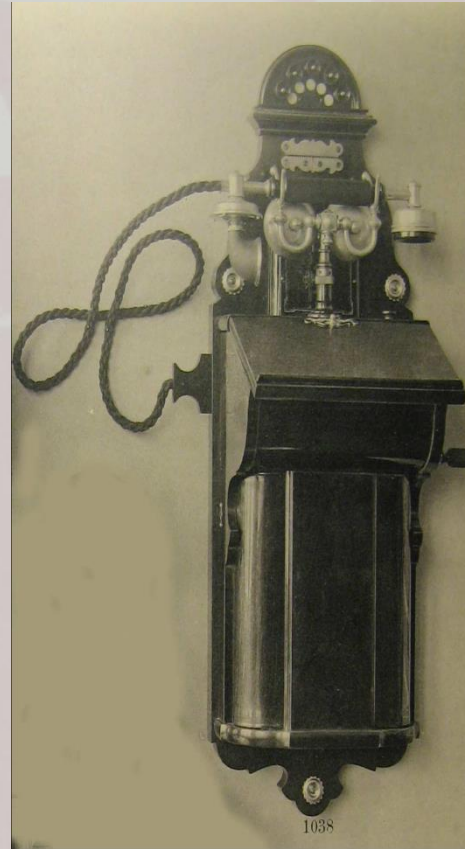
Telefoons ATEA in de Belle Epoque

door de Vrienden van het
ATEAMuseum

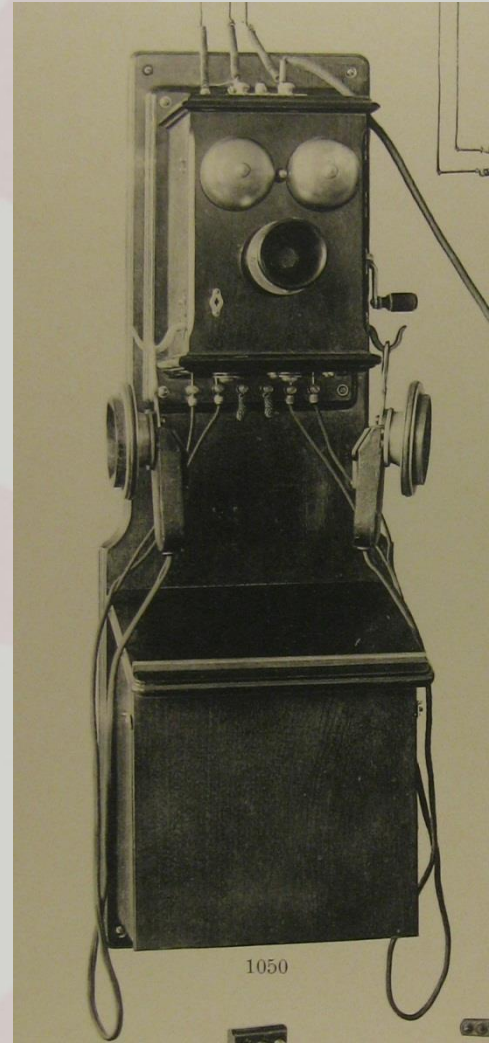
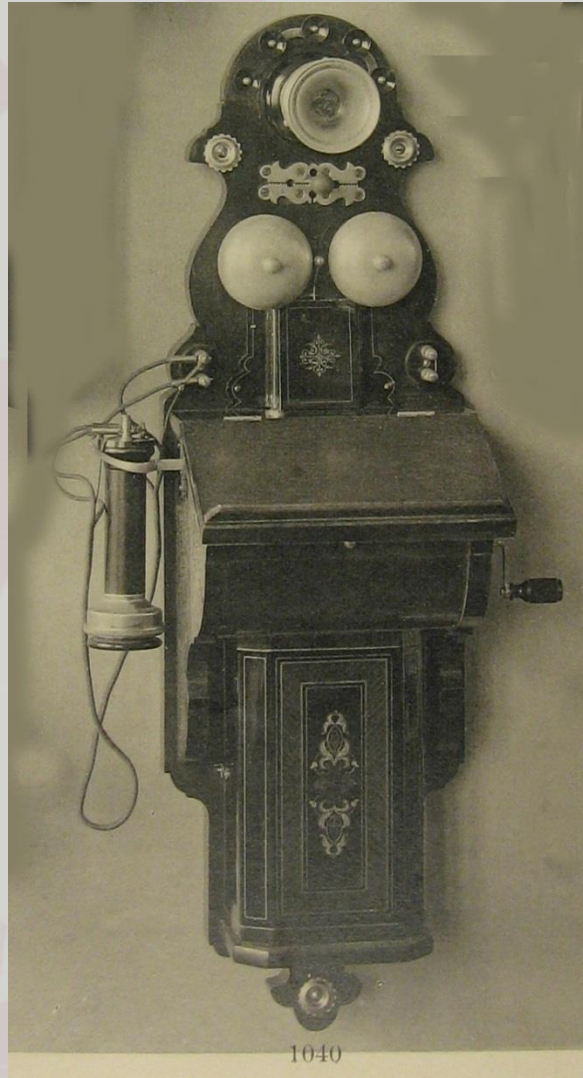
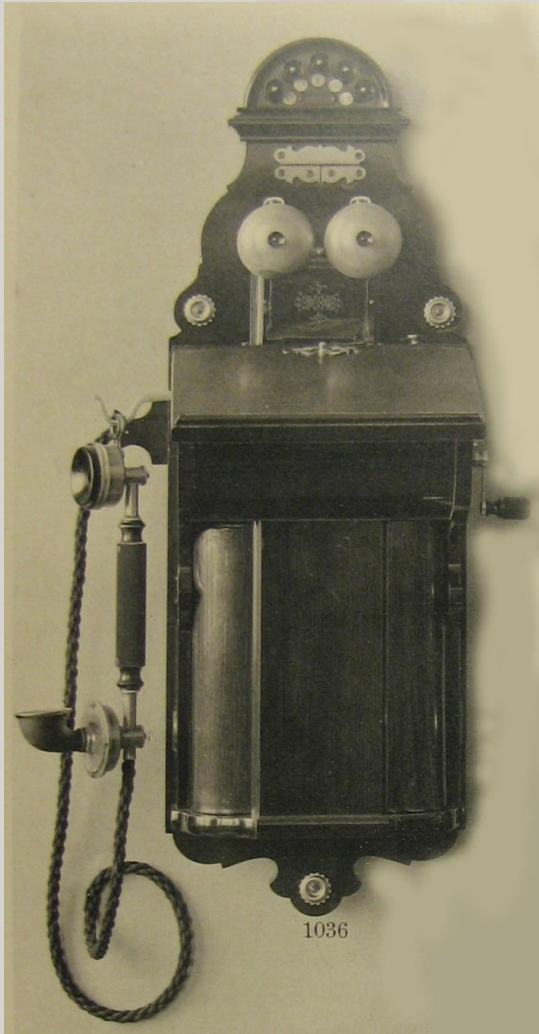
Art nouveau telefoons

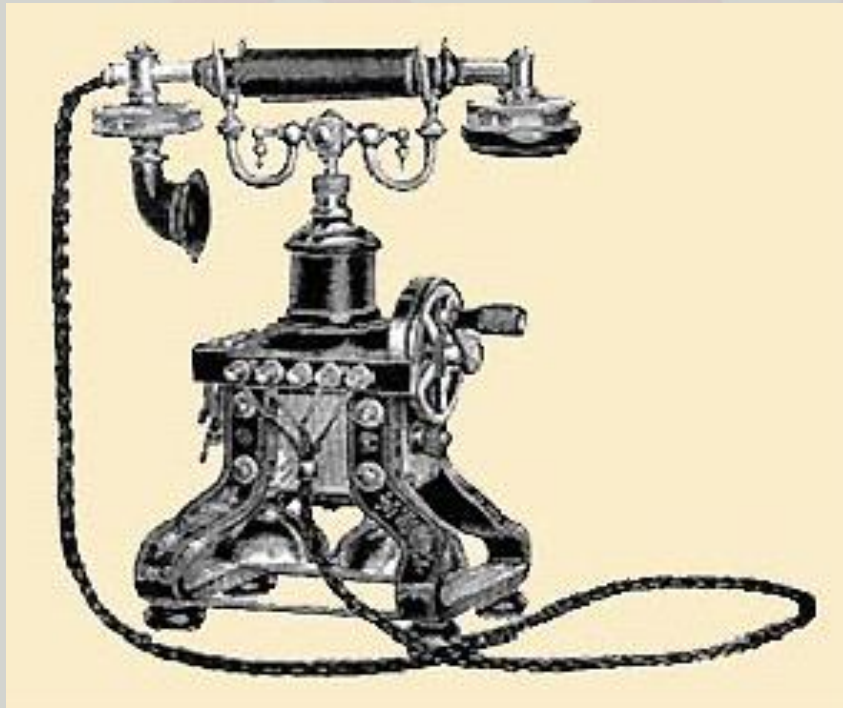


Ericsson, Zweden

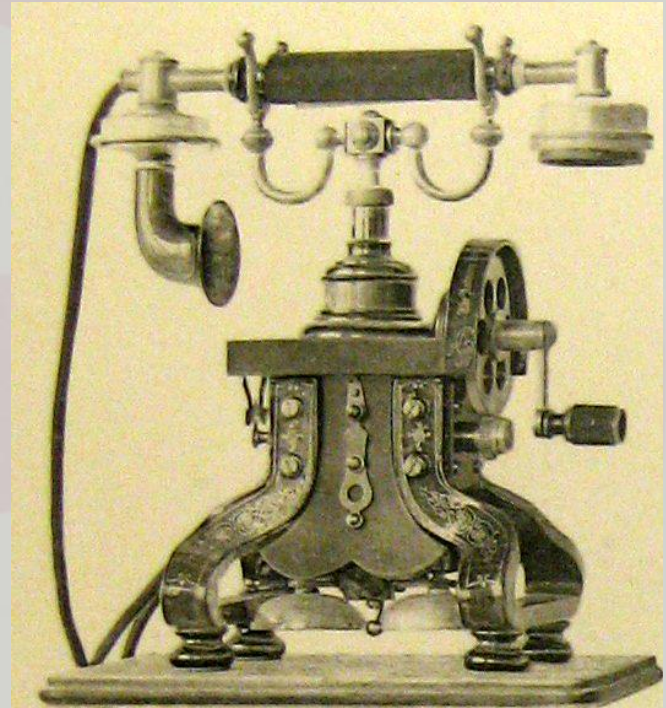


Atea, Berchem

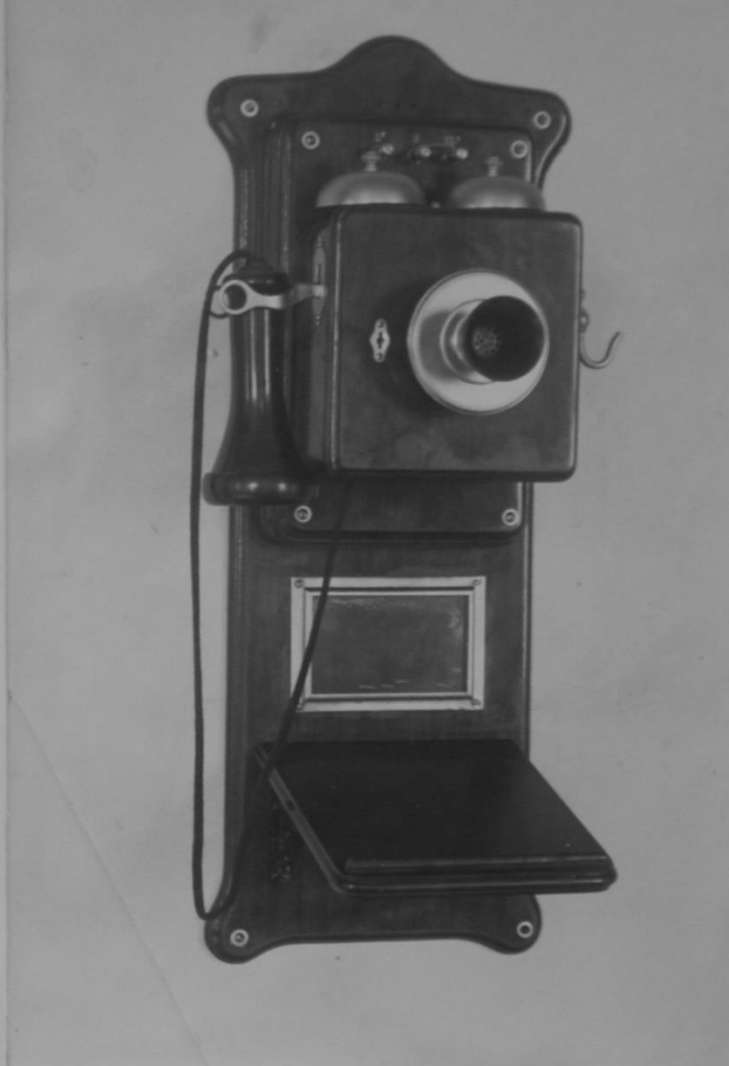
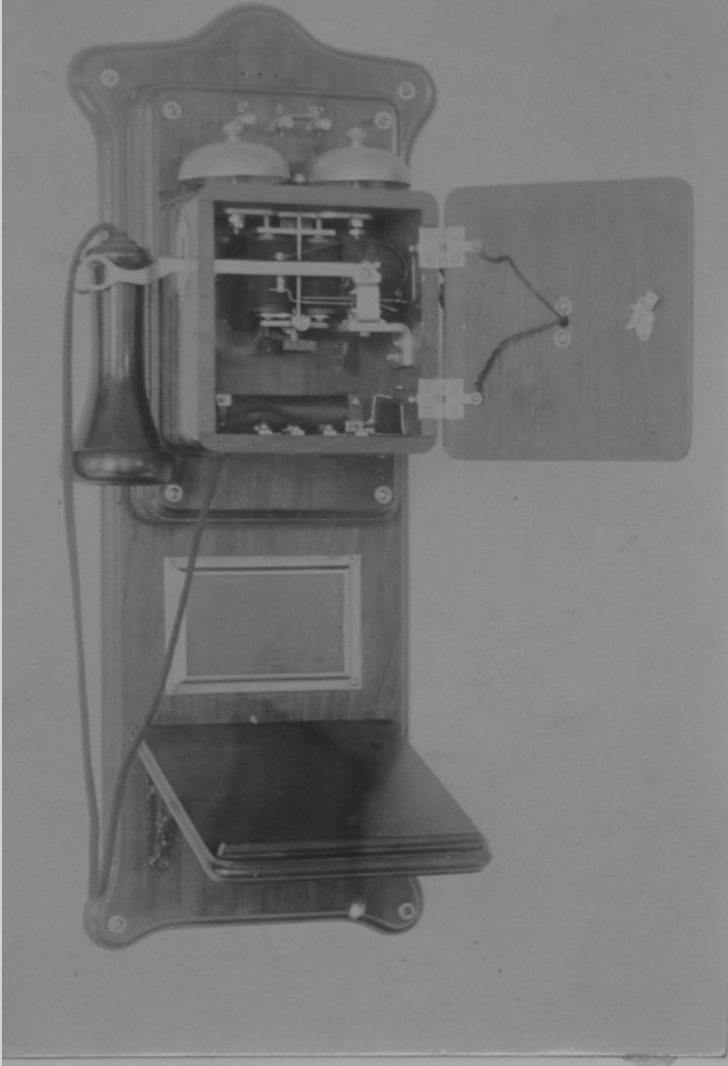


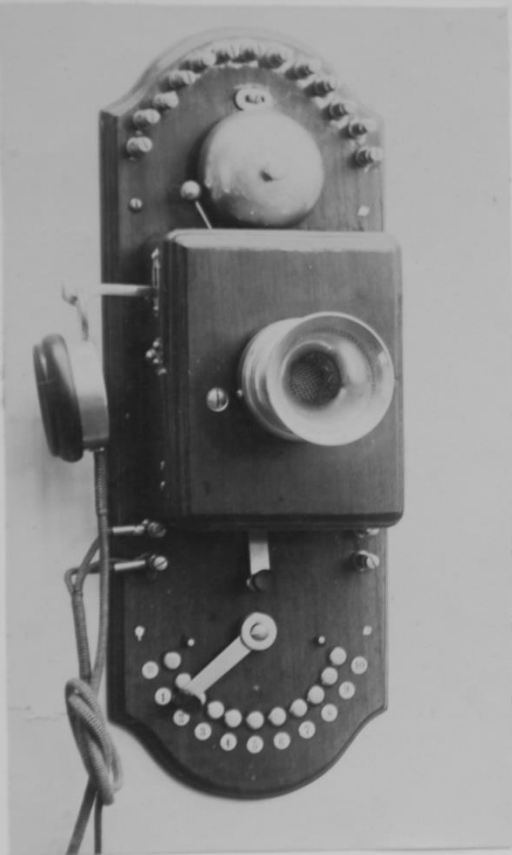


Ericsson, Sweden

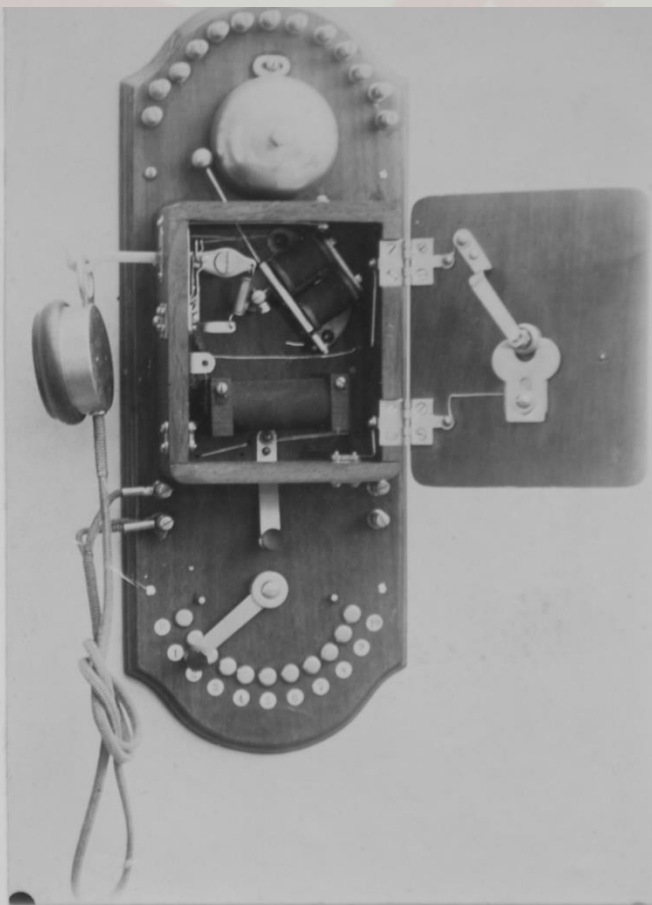


Atea Berchem,
onder licentie
gebouwd

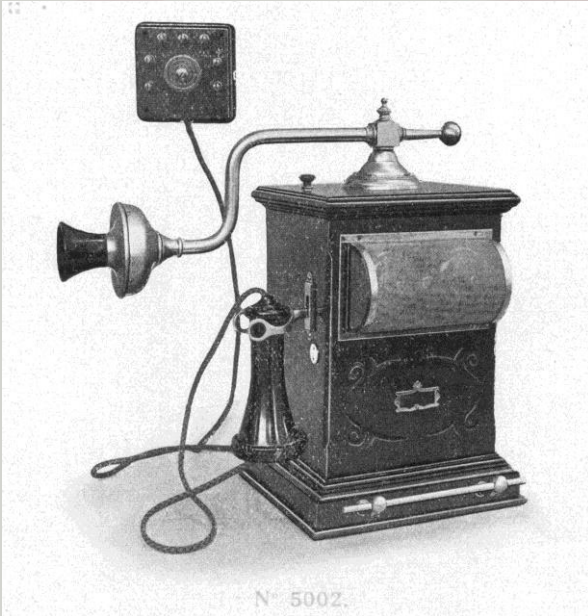


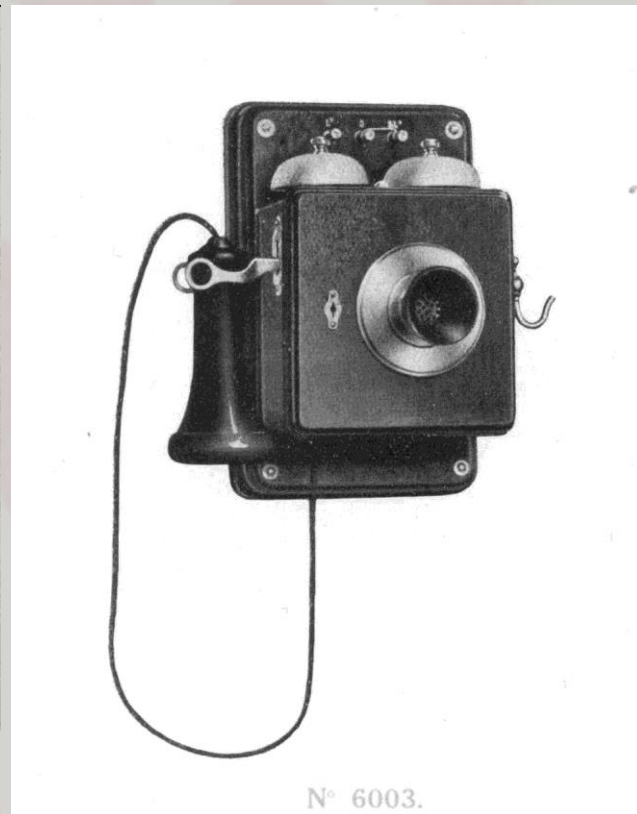
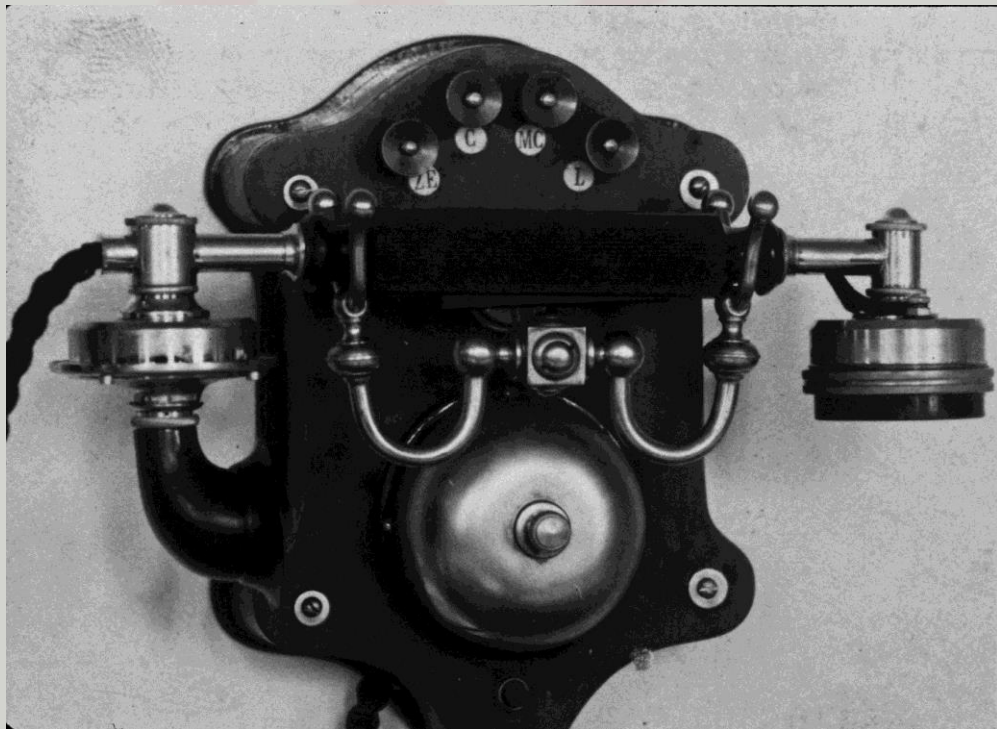


Circuit 187A



Circuit 184A





N° 6003.



















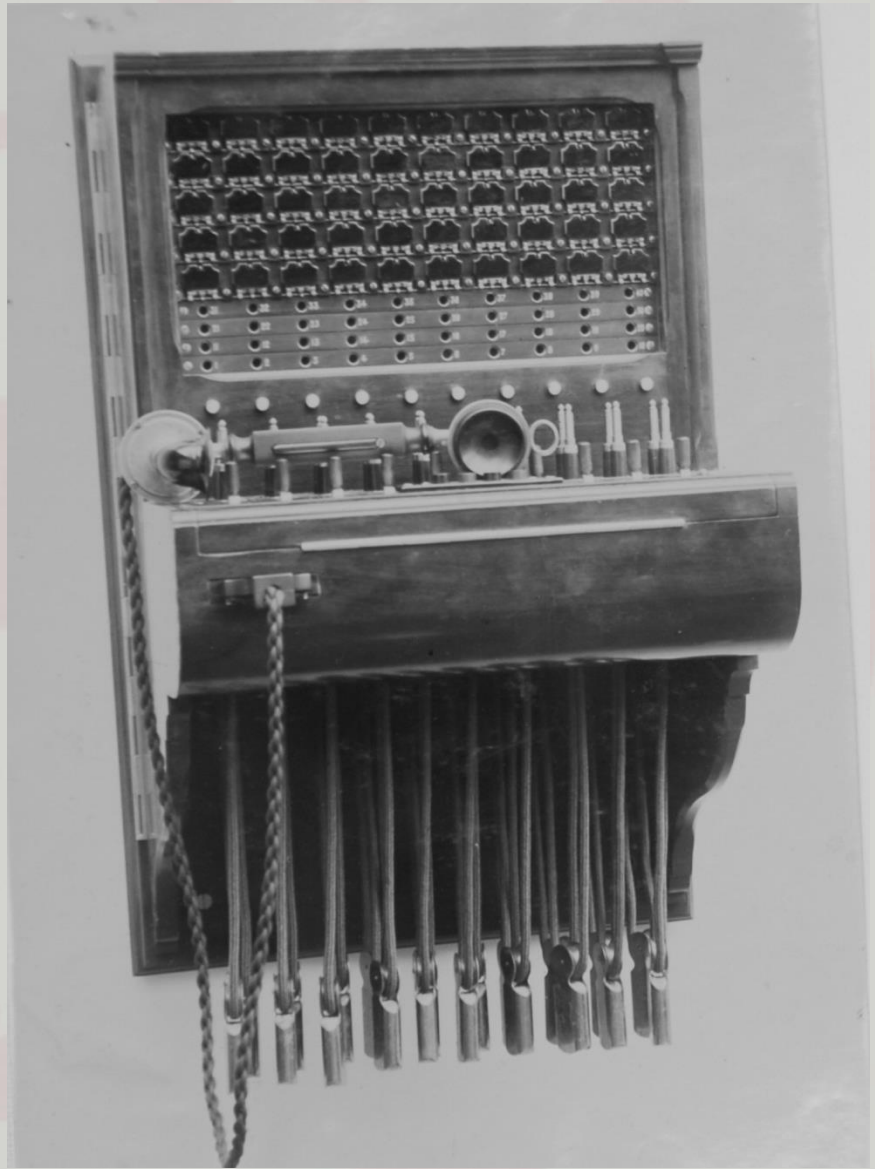
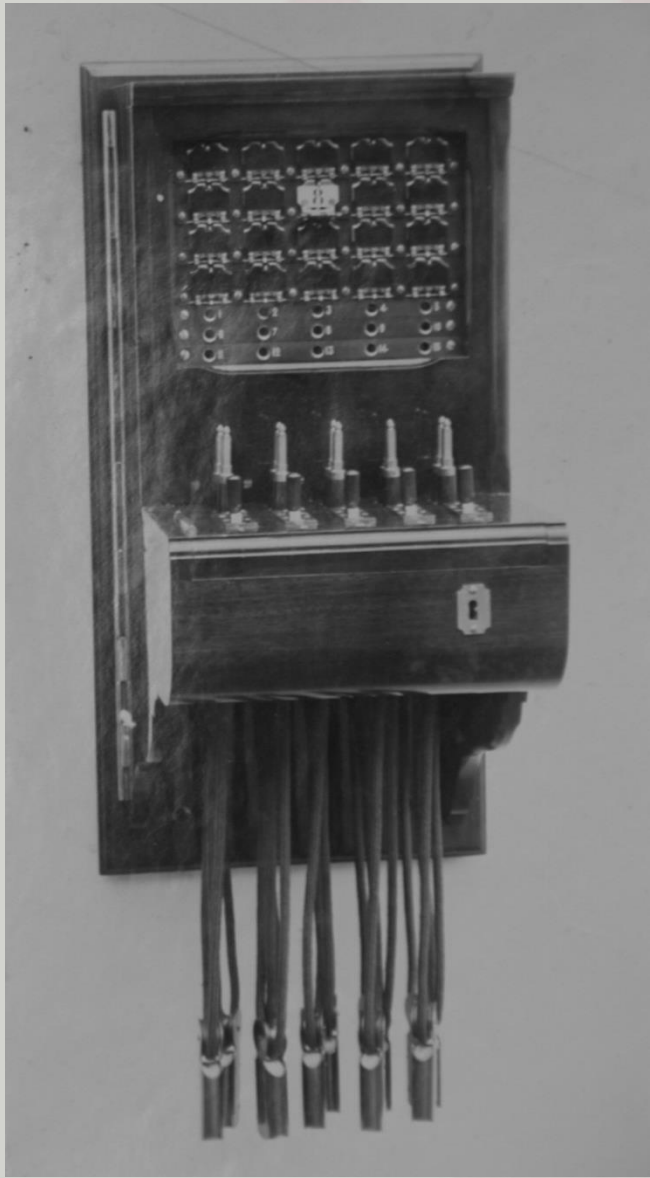


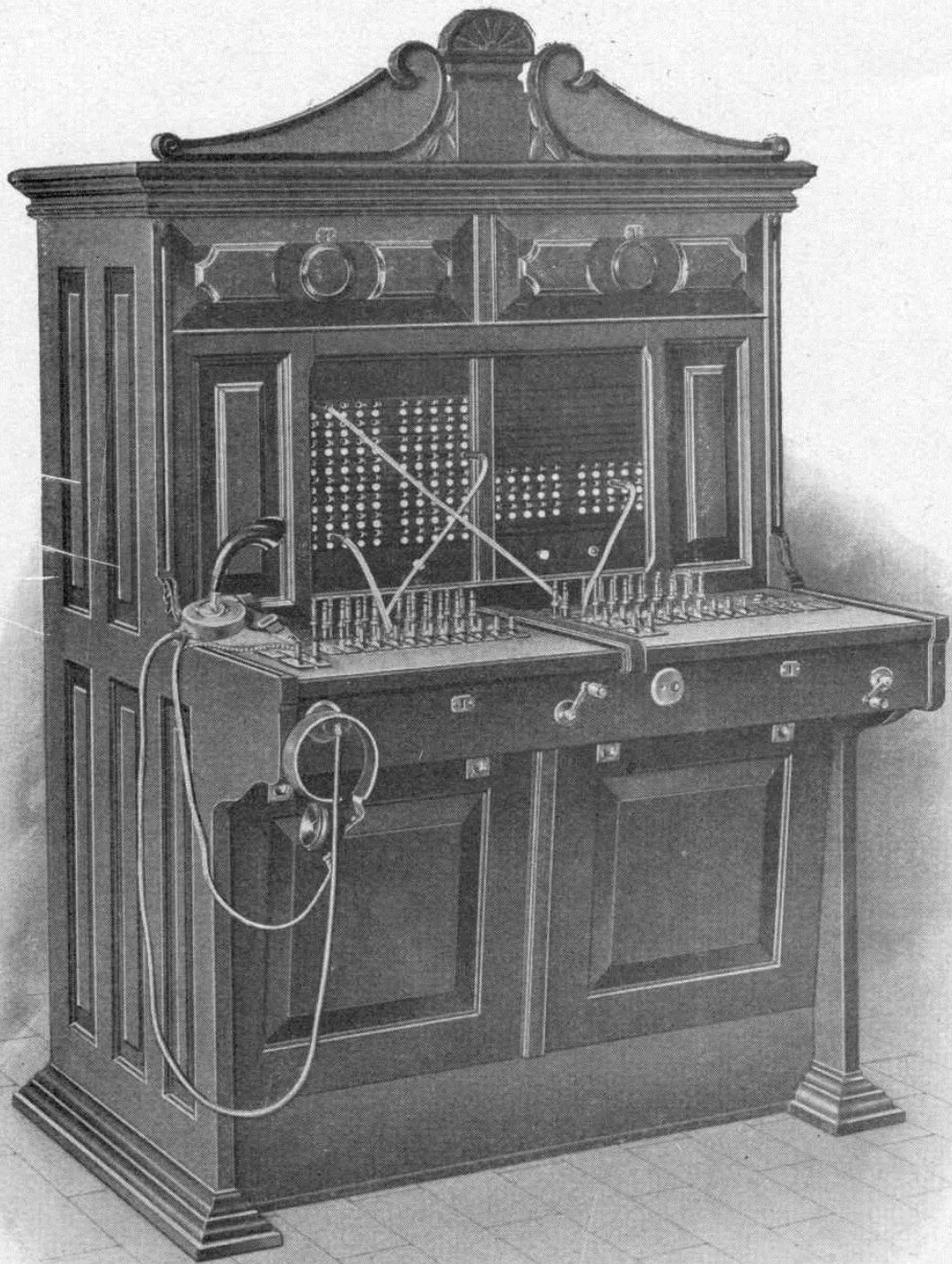


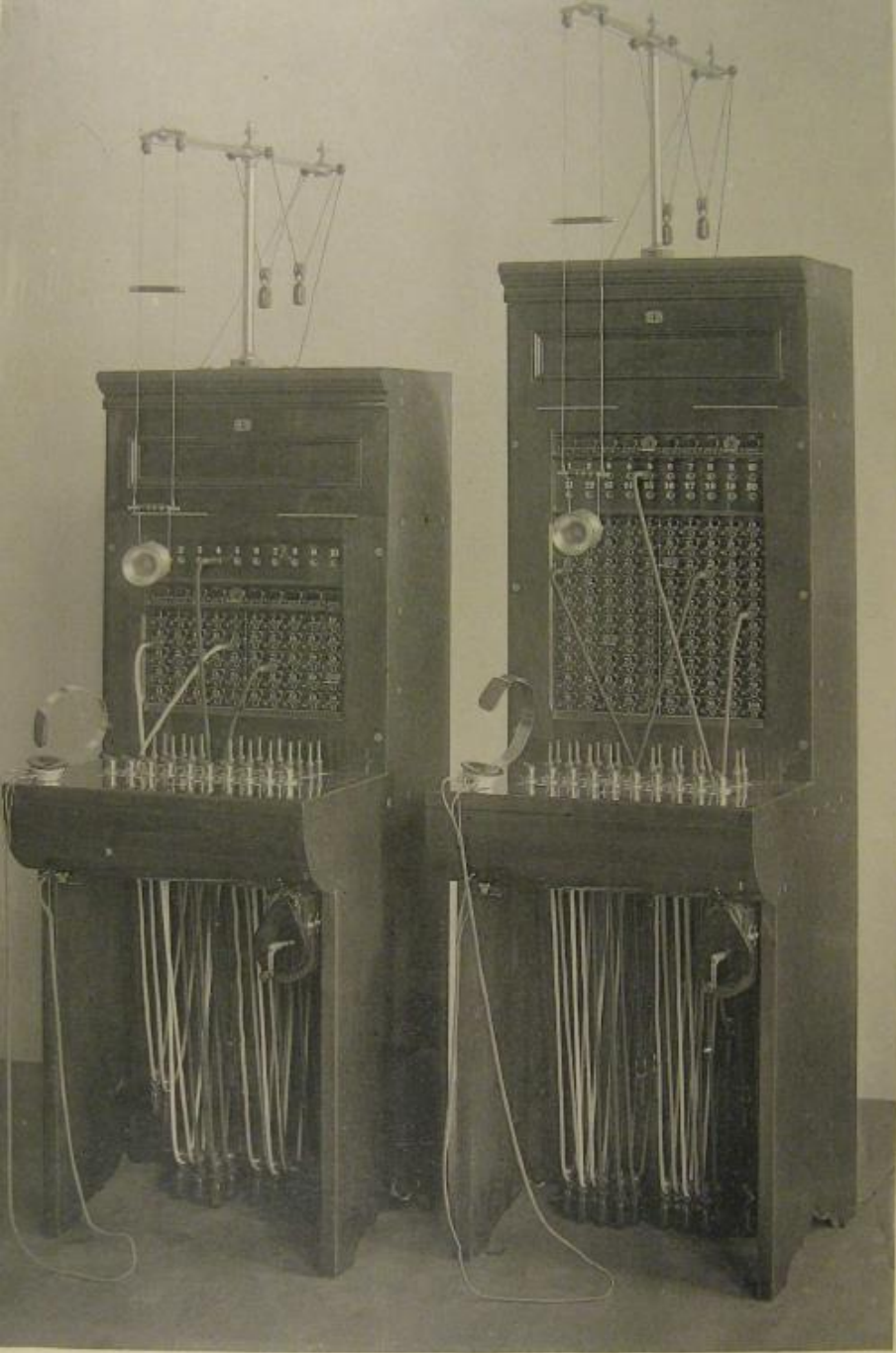


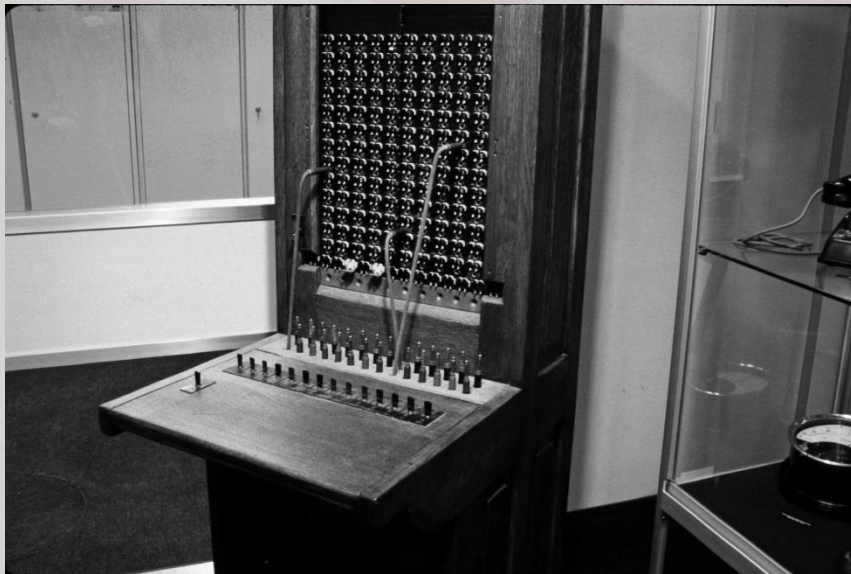
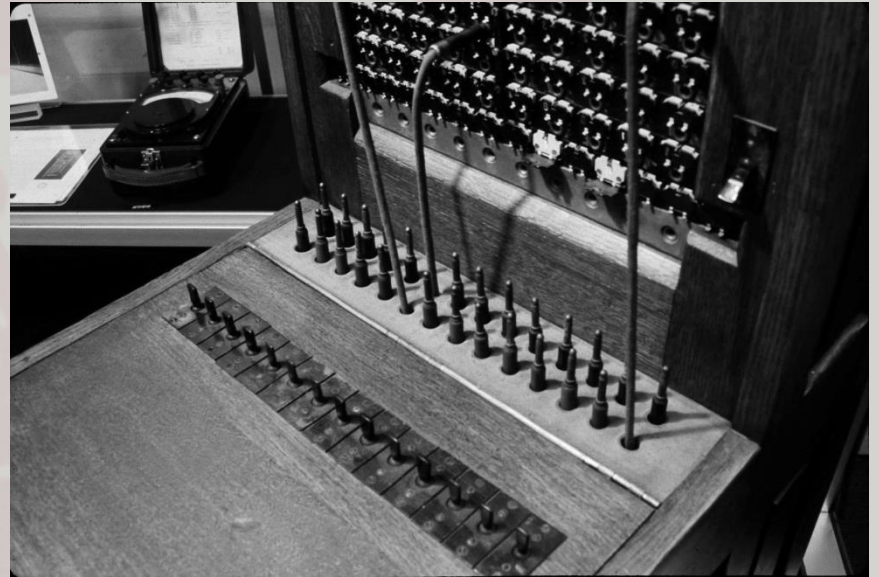
Typische centrale (1907)

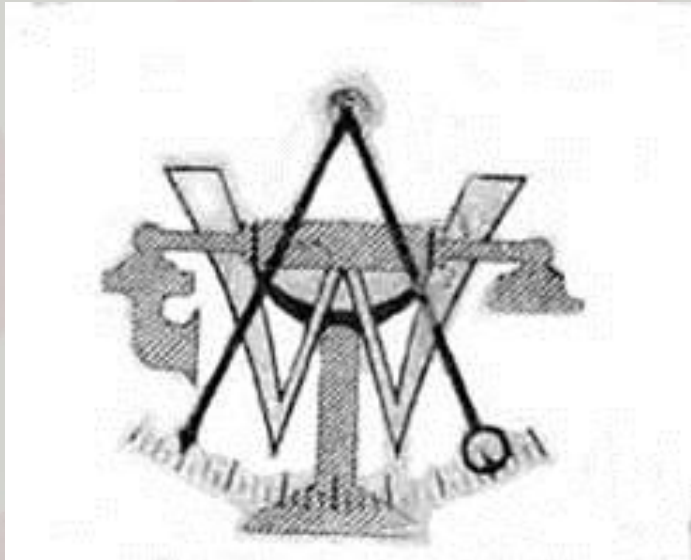
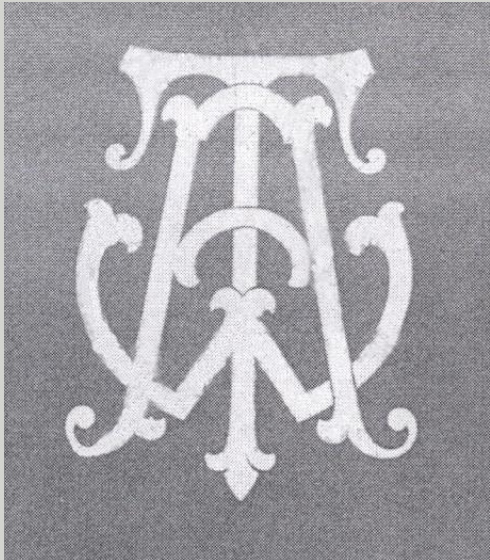












POSTES TÉLÉPHONIQUES
APPEL MAGNÉTIQUE ET BATTERIE LOCALE









Allo! Allo!

*Je viens de me lever pour te souhaiter
la*

BONNE ANNÉE

656

AN
PARIS



Joyeux Noël







5478



1918



2. — Mille tonnerres ! c'est par trop fort, une 1/2 heure d'attente et rien encore !

AIIÔ ! AIIÔ !

*Bend'Vrang
Hous Lem Ich U een beek
Lolle he thoursh. mel my for en llo.
jstere met sm huyfer
van bidt
meding el vult
de lld
bende goet
E. D.*



2 bis. — Ah ! Monsieur, désolée, le fil était dérangé, mais vous allez pouvoir communiquer de suite.



P. B. 1017

En vente



Puisque j'ai encore quelques cartes
de postales je te les envoie, les unes
accidentellement apres

Ch. Louis Lanthier

Off. à Paris et Jor.

L. Lanthier



Cartes de visite (à
envoyer à notre Paris)



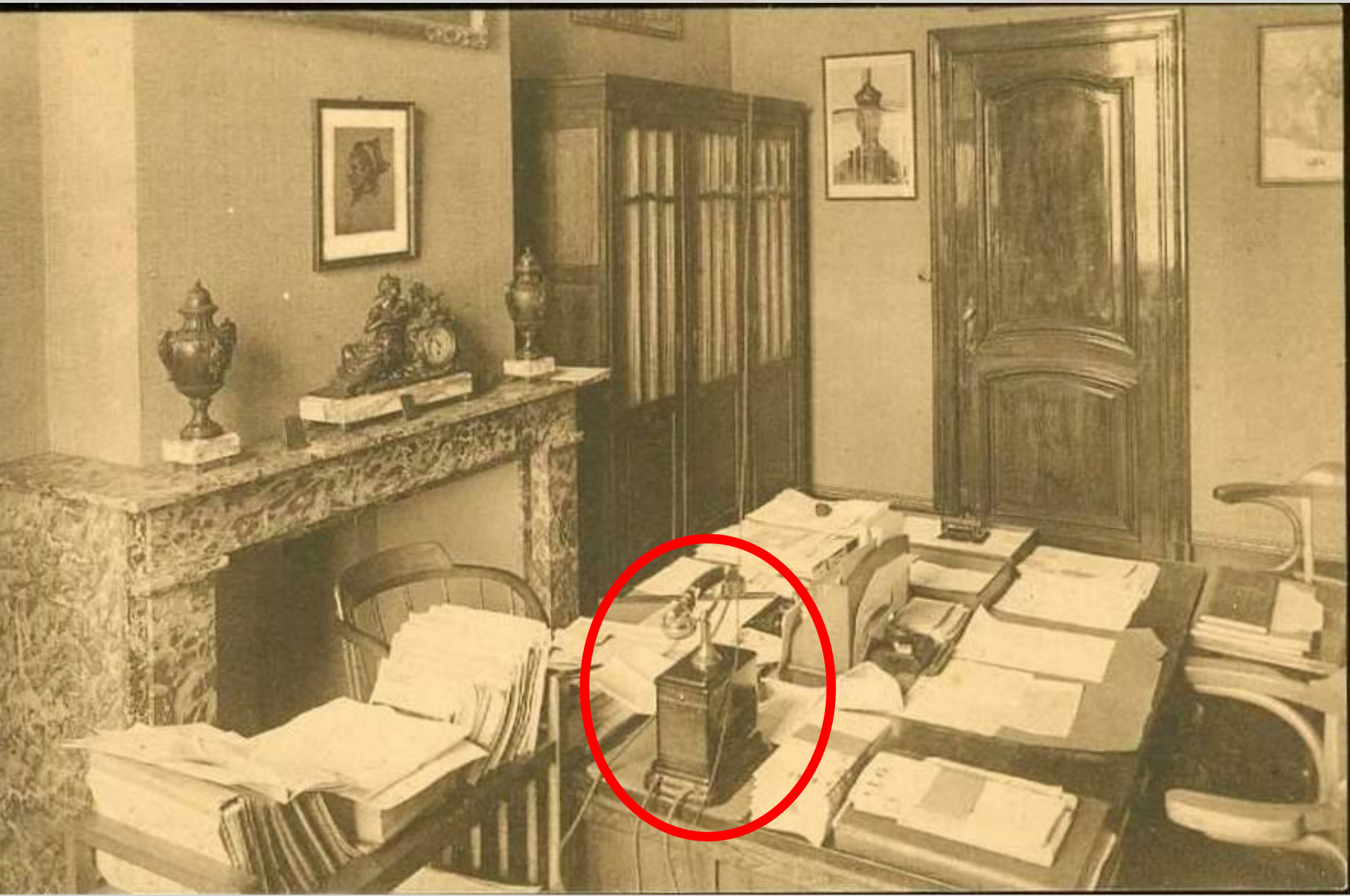
REX
403





E
SPC

2729



PUBLICITÉ AU PROFIT DES EMPLOYÉS CHOMEURS
PUBLICITEIT TEN VOORDEELE DER WERKLOOZE BEDIENDEN

PLACEMENT et ENTRETIEN GRATUITS

**DITES-LE PAR
TELEPHONE**



**ZEG HET PER
TELEFOON**

KOSTELOOS GEPLAATST en ONDERHOUDEN